

# Engineering Specification

Job Name \_\_\_\_\_  
 Job Location \_\_\_\_\_  
 Engineer \_\_\_\_\_  
 Approval \_\_\_\_\_

Contractor \_\_\_\_\_  
 Approval \_\_\_\_\_  
 Contractor's P.O. No. \_\_\_\_\_  
 Representative \_\_\_\_\_

## SI-800 Large Capacity Hair, Plaster and Sediment Interceptor

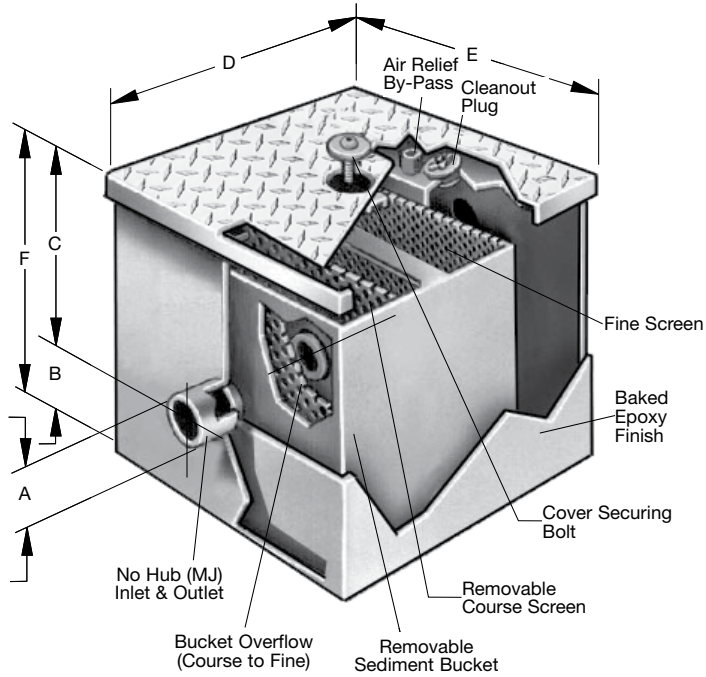
### Specification

Watts SI-800 epoxy coated inside and outside fabricated steel sediment interceptor with flow rating of 20 to 75 GPM. Includes one-piece removable bucket, code approved deep seal trap, cover securing bolt(s), and recessed "non-skid" removable rectangular cover.

### Function:

Prevents hair, plaster and sediment from entering and clogging drain lines.

Call customer service if you need assistance with technical details.



| FLOW RATE |             |
|-----------|-------------|
| SUFFIX    | DESCRIPTION |
| 20        | 20 GPM      |
| 25        | 25 GPM      |
| 35        | 35 GPM      |
| 50        | 50 GPM      |
| 75        | 75 GPM      |

| OPTIONS |                                      |
|---------|--------------------------------------|
| SUFFIX  | DESCRIPTION                          |
| -HDC    | Heavy Duty Cover                     |
| -O      | Inlet & Outlet (other than standard) |
| -SS     | All Stainless Steel                  |

| OPTIONAL INLET/OUTLET SIZE (WHEN -O IS SELECTED ABOVE) |                      |
|--|----------------------|
| SUFFIX   | DESCRIPTION          |
| -2   | 2"(51) Inlet/Outlet  |
| -3   | 3"(76) Inlet/Outlet  |
| -4   | 4"(102) Inlet/Outlet |
| -6   | 6"(152) Inlet/Outlet |

| CUBIC CAP. OF FIXTURES (IN.) | FLOW RATE GPM | A              | B              | C             | D             | E            | F            |
|------------------------------|---------------|----------------|----------------|---------------|---------------|--------------|--------------|
|                              |               | INLET & OUTLET | BASE TO CENTER | TOP TO CENTER | LENGTH        | WIDTH        | HEIGHT       |
| 4601-6150                    | 20            | 3"(76)         | 14 1/2"(368)   | 6"(152)       | 20 7/8"(530)  | 19 7/8"(505) | 20 1/2"(521) |
| 6151-7700                    | 25            | 3"(76)         | 16 1/2"(419)   | 6"(152)       | 20 7/8"(530)  | 19 7/8"(505) | 22 1/2"(572) |
| 7701-10750                   | 35            | 4"(102)        | 14 1/2"(368)   | 6"(152)       | 32 7/8"(835)  | 24 7/8"(632) | 20 1/2"(521) |
| 10751-15400                  | 50            | 4"(102)        | 18 1/2"(470)   | 6"(152)       | 32 7/8"(835)  | 24 7/8"(632) | 24 1/2"(622) |
| 15401-23000                  | 75            | 4"(102)        | 26 1/2"(673)   | 6"(152)       | 40 7/8"(1038) | 24 7/8"(632) | 32 1/2"(826) |

### NOTICE

The information contained herein is not intended to replace the full product installation and safety information available or the experience of a trained product installer. You are required to thoroughly read all installation instructions and product safety information before beginning the installation of this product.

Watts product specifications in U.S. customary units and metric are approximate and are provided for reference only. For precise measurements, please contact Watts Technical Service. Watts reserves the right to change or modify product design, construction, specifications, or materials without prior notice and without incurring any obligation to make such changes and modifications on Watts products previously or subsequently sold.



USA: T: (800) 338-2581 • Watts.com  
 Canada: T: (888) 208-8927 • Watts.ca  
 Latin America: T: (52) 55-4122-0138 • Watts.com